



# JET FORCE



TECHNICAL NETWORK LEADERSHIP

## 125cc EFI ABS/PBS

### Datasheet

Reference : 756693

#### GENERAL CHARACTERISTICS :

##### SPECIFICATIONS :

Company name : Jet Force 125cc  
Mines type \*\* : A2ABJD  
(\*official French body responsible for regulating weights and measures and changes made to motor vehicles).

##### DIMENSIONS (in mm) :

Length : 1918  
Width : 740  
Height (without rear-view mirrors) : 1191  
Ground clearance : 112  
Wheel base : 1369

##### WEIGHT (in kg) :

Laden weight : 149

##### STEERING :

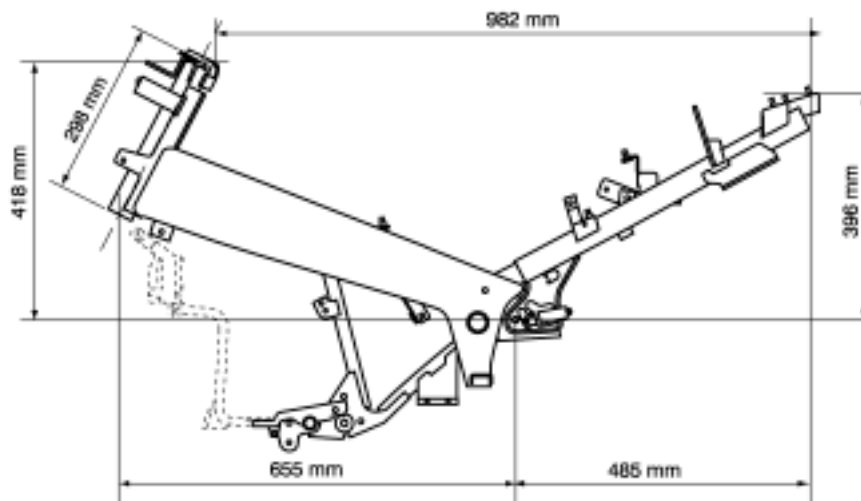
Steering column mounted with ball-bearing cone and cup.

##### CAPACITIES (in litres) and RECOMMENDATIONS :

Fuel tank (including reserve) : 8 : super unleaded petrol (95 or 98) only.  
Oil sump : \*  
Crankcase : 1,25 . SAE 10W40  
Cooling system : 1,6  
Relay box : 0,12 . SAE 80W90  
Fork : 0,19 per tube (ESSO UNIVIS 46 or AGIP H LIFT 46)  
Braking circuit : DOT

##### GREASING :

Pressurised wet sump lubrication, trochoid pump driven by a gear set from the crankshaft, pressure relief valve calibrated at 4 bars.  
Filter : removable paper cartridge.



##### COOLING :

Cooling by pump driven water circulation, pump integrated in the engine sump and driven by a gear set from the crankshaft.

Pressurised, sealed circuit with pump, thermostat (opening at 85°C, fully open at 100°C), radiator, expansion tank and electric fan controlled by a thermal switch (engaging at 90°C, cut out at 85°C).

##### ENGINE :

4-stroke single-cylinder, 2 valves per cylinder with chain driven overhead camshaft.

Cylinder capacity : 125 cc  
Bore 1 shore : 57 x 48,9  
Max power : 9,2 kW  
Max power rating : 8750 rpm  
Max torque rating : 7250 rpm

##### TRANSMISSION :

By 2 variable pulleys and V-type belt. 6-roller type drive pulley mounted on the left shank of the crankshaft. Fixed flange of the pulley equipped with cooling fins to cool the belt.  
Driven/centrifugal 3-block lined clutch pulley mounted on the end of the relay box input shaft.

##### RELAY BOX :

By shaft and pinions. Double set of pinions.

- 1<sup>st</sup> gear teeth set : helical.
- 2<sup>nd</sup> gear teeth set : helical.

##### SUSPENSION :

Front suspension type : hydraulic telescopic fork.  
Travel : 95 mm  
Rear suspension type : 1 central combined hydraulic spring shock absorber.  
Travel : 90 mm

##### MAIN BRAKE :

Integral braking hydraulically-operated with assistance and anti-locking on the front.  
Diameter of brake pistons :  
- Front calliper : 2 pistons of 25 mm  
- Rear calliper : 2 pistons of 22 mm  
Discs diameter and thickness :  
- Front disc : 226-4,5 mm  
- Rear disc : 210-4 mm  
Mini thickness :  
- Front and rear disc : 4 and 3,5 mm  
Diameter of the master-cylinder : 12 mm

##### EMERGENCY BRAKE :

Brake with hydraulic control acting upon the front calliper.  
Diameter of brake pistons : 2 pistons of 25 mm  
Diameter of the master-cylinder : 11 mm

##### WHEELS AND TYRES :

Integral aluminium wheels and tubeless tyres.

	Front	Rear
Rim dimensions :	3" x 13"	3,5" x 13"
Tyres dimensions :	130/60 - 13	140/60 - 13
Pressures (bar) :	2	2,2
Max wheel disc :	0,8 mm	0,8 mm
Balance :	yes	*

#### TIGHTENING TORQUES (Nm) :

##### ENGINE :

Cylinder head : 23  
Exhaust mounting on the cylinder head : 15 to 18  
Crankcase : 8 to 10  
Spark plug : 10

##### CYCLE PART :

Engine mounting on connecting rod : 52 to 62  
Front wheel : 47 to 53  
Upper nut on the steering column : 60 to 80  
Rear wheel : 100 to 120  
Shock-absorber mounting, rear, upper : 43 to 50  
Inner : 33 to 40  
Front brake calliper : 25 to 35  
Front brake disc : 27 to 32  
Rear brake calliper : 25 to 35  
Rear brake disc : 27 to 32  
Phonic wheel on front wheel : 6 to 8  
Sensor on its support : 9 to 10

#### ADJUSTEMENTS AND CHECKS :

##### 4-STROKE ENGINE :

Distribution diagram. AOA : 10° AOE : 40°  
RFA : 40° RFE : 10°  
Valve clearances. Intake : 0,10 to 0,15 mm  
Exhaust : 0,25 to 0,30 mm

##### CYLINDER / PISTON :

Ring gap clearance.  
Upper : 0,15 to 0,35 mm  
Lower : 0,15 to 0,30 mm

##### CONNECTING ROD/CRANKSHAFT :

Crankshaft run-out : 0,07 mm

##### SUPPLY CIRCUIT :

Gas pump : Synerject  
Gas injector : Siemens  
Disc box : Bing  
Idle valve : Synerject - Freudenberg  
Altimetric and air temperature sensor : Synerject - Siemens

\* : Not completed

### IGNITION :

Ignition and injection control unit : Synerject - Philips  
 Spark plug : NGK CR7EB  
 Electrode gap : 0,6 to 0,7 mm  
 Ignition advance : cartographic  
 Ignition coil : Synerject  
 Primary winding resistance :  $0,63 \pm 0,03 \Omega$   
 Secondary winding resistance : \*  
 Spark plug cap resistance :  $5 \text{ k}\Omega \pm 20\%$   
 Pick-up resistance :  $120 \Omega \pm 10\%$

### ELECTRICAL EQUIPMENT :

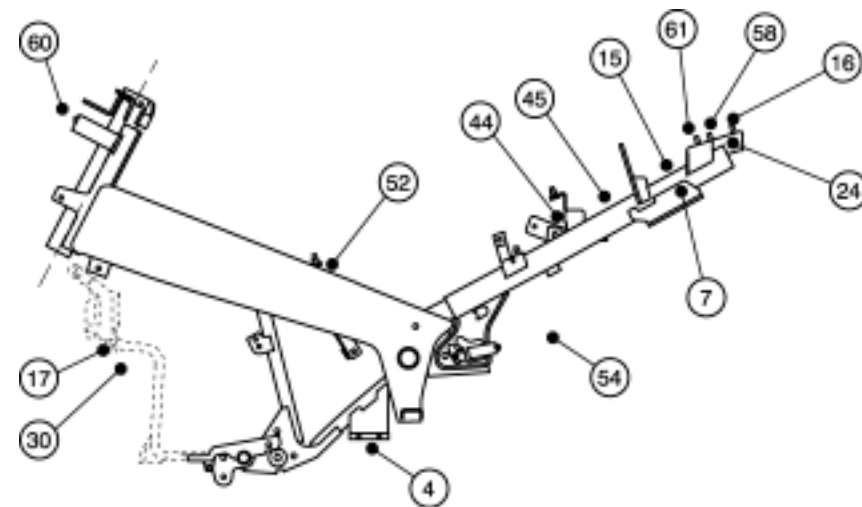
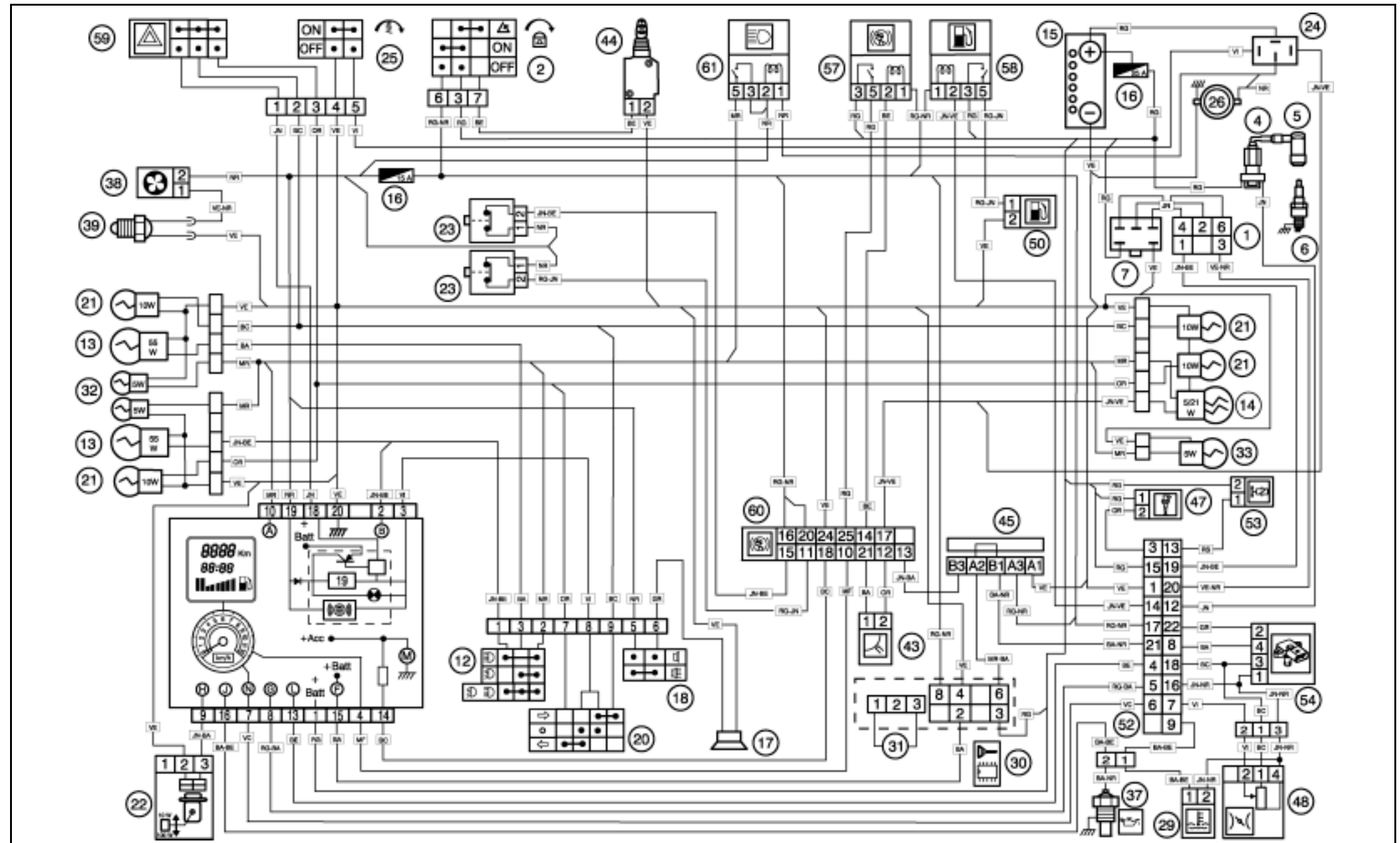
Current generator (power) : 330W  
 Make : MITSUBA  
 Stator resistance : (3 yellow wires)  $0,5 \Omega$  between the phases  
 Battery regulation voltage :  $14,5 \pm 0,5V$   
 Battery (type and capacity) : YT12L-B - 12V 12Ah

### STARTER :

Power and type : 440W - SM14217  
 Make : MITSUBA

### LIGHTING AND FUSES :

	Quantity	Power
Headlamp (code light) :	2	12V - 55W
Red stop lamp :	1	12V - 21/5W
Indicator lamps :	4	12V - 10W
Number plate lightning :	1	12V - 5W
Dash board lighting :	*	Led
Instrument panel indicator lamps :	*	Led
Main fuse :	1	25A
Signalling fuse :	1	15A
"Side light" bulbs :	2	12V - 5W



A	Instrument panel lightning	14)	Stop /tail light	38)	Cooling fan	BA :	White	VE :	Green
B	Main beam control	15)	Battery	39)	Thermo-switch cooling fan	BA-BE :	White/Blue	VE-NR :	Green/Black
D	Indicator control light	16)	Fuses	42)	Switch "Reserve"	BA-NR :	White/Black	VI :	Purple
E	Fuel gauge	17)	Horn	43)	Speed sensor	BC :	Light blue		
F	LED "Anti theft device"	18)	Horn switch	44)	Saddle actuator	BE :	Blue		
G	Temperature gauge	19)	Indicator relay	45)	Diagnostic plug	GR :	Grey		
H	Warning light "reserve"	20)	Indicator switch	46)	Air injector	JN :	Yellow		
J	Oil pressure	21)	Indicator bulb	47)	Fuel injector	JN-BA :	Yellow/White		
K	Watch	22)	Fuel gauge pickup	48)	Disc box	JN-BE :	Yellow/Blue		
L	EFI diagnostic light	23)	Stop light switch	50)	Fuel pump	JN-NR :	Yellow/Black		
M	ABS/PBS light	24)	Starter relay	51)	Oil pump	JN-VE :	Yellow/Green		
N	Revolution counter	25)	Starter switch	52)	Ignition and injection control unit	MC :	Light Brown		
1)	Generator	26)	Starter motor	53)	Idle valve	MR :	Brown		
2)	Ignition switch	28)	Oil level switch	54)	Air temperature and altimetric sensor	MR-BA :	Brown/White		
4)	Ignition coil (high voltage)	29)	Temperature sensor	55)	Blinking light relay	NR :	Black		
5)	Spark plug socket (resistive) $5 \text{ k}\Omega$	30)	Immobilizer	56)	Warning relay	OR :	Orange		
6)	Spark plug (resistive) $5 \text{ k}\Omega$	31)	Antenna for anti-theft device	57)	ABS/PBS relay	RG :	Red		
7)	Regulator, rectifier	32)	"Side light" bulb	58)	Fuel pump relay	RG-BA :	Red/White		
10)	Light switch	33)	Number plate light	59)	Warning control	RG-JN :	Red/Yellow		
12)	Dip switch (main/low headlight)	36)	"Neutral" switch (gearbox)	60)	ABS/PBS	RG-NR :	Red/Black		
13)	Headlight	37)	Oil pressure switch	61)	Light relay	RS :	Pink		
						VC :	Light Green		